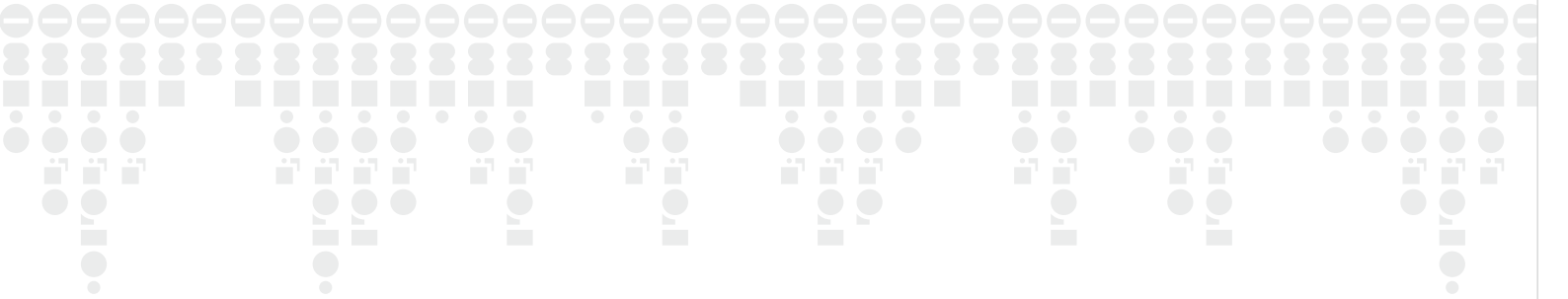


CONNECTION SOLUTIONS | CONTROL & POWER SOLUTIONS



INTERFACE SOLUTIONS | CABLE MANAGEMENT SOLUTIONS



**connectwell**  
THE RIGHT CONNECTION



# INDEX

---

## COMPANY PROFILE

1 - 4

## TERMINAL BLOCKS

CP Series Push-In Terminal Blocks	5 - 6
CX Series Spring Clamp Terminal Blocks	7 - 8
Pluggable Terminal Blocks	9 - 10
High Performance CY Series Screw Clamp Terminal Blocks	11 - 12
Standard CTS Series Screw Clamp Terminal Blocks	13 - 14
Stud / Bolt Type Terminal Blocks	15 - 16
Miniature & Panel Mount Terminal Blocks	17 - 18
Terminal Blocks for Rolling Stock	19 - 20
Virtual Config	21
Connectwell Eplan	22

## ELECTRONIC SOLUTIONS

CRM Series - High Performance Relay Modules	23 - 24
CSR Series - Compact Slim Relay Modules	25 - 26
CIMRE Series - Next Generation Relay Boards	27 - 28
IMRE Series - Custom Relay Interfaces	29 - 30
Passive & Protection Interface Modules	31 - 32
Fan Monitoring & Control Devices	33 - 34
Power Supplies	35 - 36

## CABLE MANAGEMENT SOLUTIONS

Flexible Conduits	37 - 38
Conduit Glands & Accessories	39 - 40
Polyamide & Metallic Cable Glands	41 - 42
Explosion Proof Cable Glands, Conduit Glands, & Accessories	43 - 44
Cable Drag Chains	45 - 46



# Making A Million Connections Everyday

A story of  
**billions** of  
electrical  
connections  
made over  
**4 decades**

From very humble beginnings to becoming one of the leading manufacturers of Terminal Blocks in the world, Connectwell is a dynamic organization focused on making the highest quality electro-mechanical and electronic products.

15+ international product certifications backed by the most stringent quality standards put our products through 40+ quality tests. This has ensured a ready acceptance of our products across 80+ countries and in thousands of projects and applications.

With world class manufacturing infrastructure and systems which are ISO certified, Connectwell today has become a synonym for

**... The Right Connection**

# VISION

We will build a brand that puts people at the center of it's business.



For our employees we will create an environment which inspires them to achieve higher goals.



For our customers we will provide products which bring them the right value.



For the society at large we will create meaningful employment and will support those in need.

# MISSION

Connectwell is dedicated to achieve customer satisfaction by, supplying the Right Product, at the Right Time and at the Right Cost.

## connectwell TODAY

1 M+

Connections Made Everyday

45+ Yrs.

Delighting Customers

15+

Global Product Approvals

40+

Quality Tests

80+

Countries Serviced

300+

Channel Partners

# OUR STRENGTHS

From product conceptualization to realization, we are well equipped with the latest software and high precision machinery to meet the requirements of our customers. Some of these strengths are:



Precision High Volume Plastic Moulding

High Speed Sheet Metal Processing

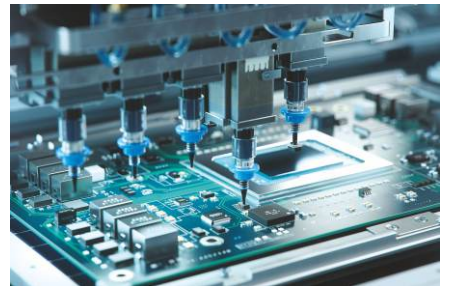
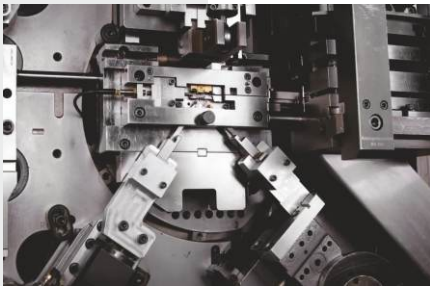
Precision Electronic Manufacturing

High Volume Automated Assembly

Electro-mechanical and Electronic Product Design

Tool Design and Development

Highly Automated Supply Chain Management



## QUALITY as a way of life



**International Product Approvals**

IEC, UL, CSA, VDE, CCC



**Industry Specific Approvals**

ATEX, IECEx, AEX, EAC, INMETRO

**QMS**

**System**

ISO9001:2015



**Environmental Consciousness**

ISO14001:2015



**Work Place Safety**

ISO45001:2018



**UL Accredited Laboratory**

Enable rapid and consistent product testing



**Enterprise Class Software**

SAP, Dynamics, Team Center



**Operational Excellence**

TPM, Lean Six Sigma

# SOLUTIONS ACROSS INDUSTRIES

Our customers range from the largest to smallest enterprises across a variety of industries.

Here are some interesting case studies.



Connection Solutions for Telangana Super Thermal Power Project

Power



Dust Proof Interfacing Solutions for Cement Industry

Continuous Process



Smart Electrical Connections for a World Class Machine Builder

Machinery & Factory Automation



Connectwell Solutions for a Global HVAC Leader

Building Infrastructure



READ MORE  
CASE STUDIES  
HERE



Electrical Connection Solutions for Challenging Railway Requirements

Railways



## PRESENT Where & When YOU NEED US

### VIRTUAL

Product Configuration

Our Visual Solution Configurator allows you to create custom solutions for your needs in minutes.

### <<< WIDE >>>

Network of Distributors

Our dealers across India and the world, ensure the availability of our products and mitigate any supply chain hindrances.

**100+** Sales & Product Support Personnel

Our skilled Sales and Marketing Team, backed by Product Experts, is here to guide you to the right solution for your needs.

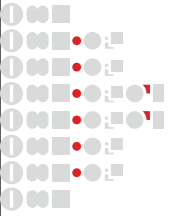
Present in **80+** Countries

No Matter where your business takes you, you will find Connectwell present to help you with products and solutions



Self Service Portal

Our Self Service Portal enables you with the correct information on the status of your orders and more.



# CP SERIES PUSH-IN TERMINAL BLOCKS

- | TOOL FREE WIRING | COMPACT SIZE |
- | SAVE 75% WIRING TIME | 400% FASTER |
- | HIGH PULL-OUT FORCES |

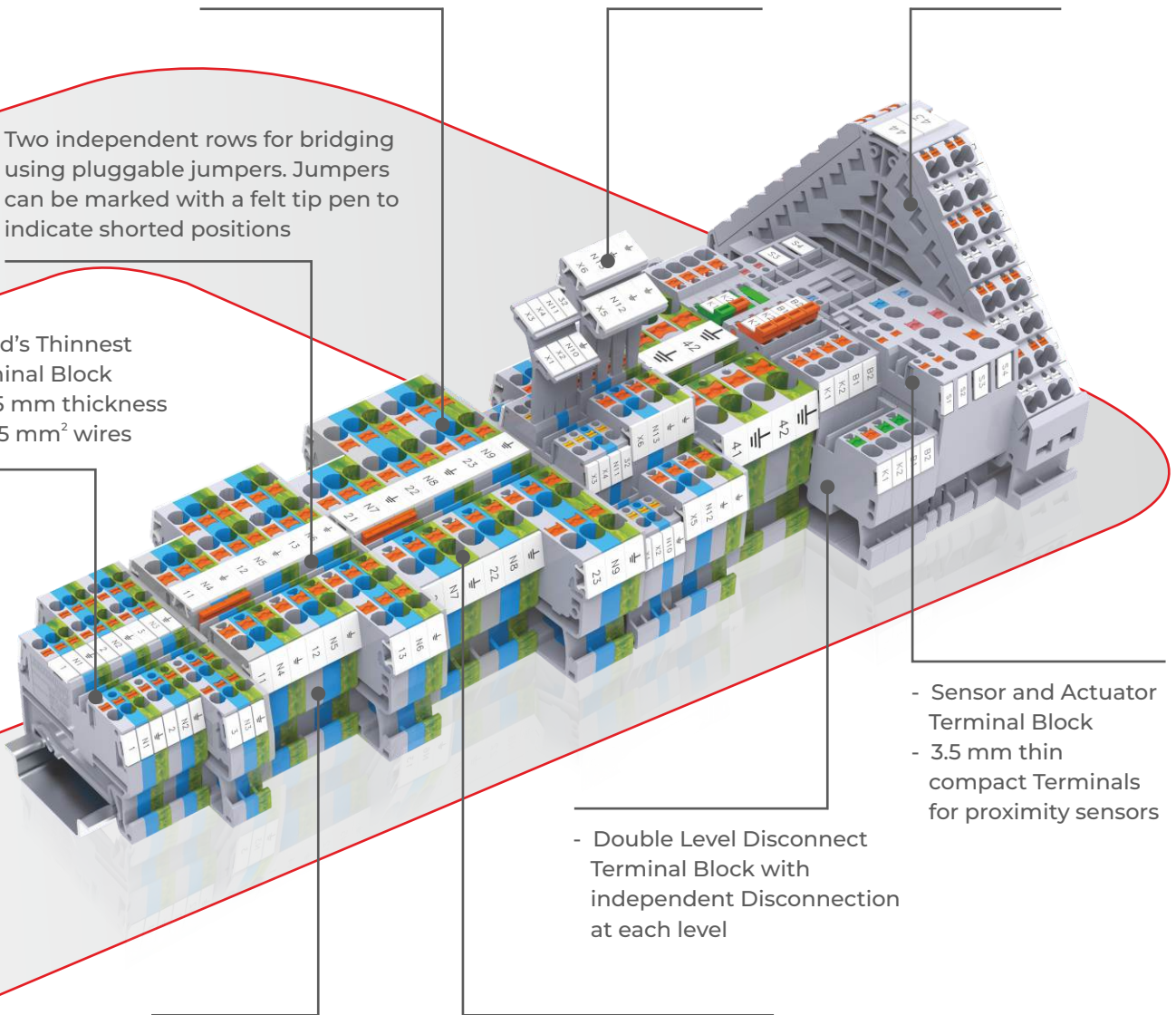
Multiple Connection  
to eliminate  
reliability problems

Raised group marker  
carrier for better  
visibility  
& identification

4 & 8 Level  
Marshalling  
Terminal Block

Two independent rows for bridging  
using pluggable jumpers. Jumpers  
can be marked with a felt tip pen to  
indicate shorted positions

World's Thinnest  
Terminal Block  
in 3.5 mm thickness  
for 1.5 mm<sup>2</sup> wires



- Sensor and Actuator  
Terminal Block
- 3.5 mm thin  
compact Terminals  
for proximity sensors

- Double Level Disconnect  
Terminal Block with  
independent Disconnection  
at each level

Feed Through  
Terminal Block


Earthing Terminal Blocks for  
terminating earthing wires  
coded yellow-green colour  
as per industry standards

CP series Push-In Terminal Blocks have a specialized connection system that enables tool less wire connections. Reliable, vibration resistant, gas tight connections are made with in built high quality stainless steel Push-In spring clamps.

Solid wires with crimped lugs / ferrules are simply pushed into the connection point. No special tools or screwdrivers are required for making connections and wires can be connected with minimum insertion force.

Standardized pluggable jumpers for shorting Terminal Blocks are available in multi pole configurations.

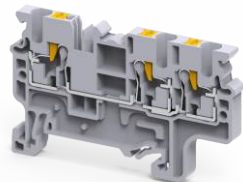
The possibility of using 2 independent rows for jumpering enables the creation of complex circuit combinations. Jumpers can be marked with a felt tip pen on the recess provided on top, to clearly indicate shorted positions.

Technical Details :	
Wire Range	0.2 - 16 mm <sup>2</sup> / 24 - 4 AWG
Voltage	1000 V
Current	Upto 67 A
Standards	IEC60947, UL1059, CSA22.2-158, IEC60079, EN60079
Approvals	
Rated Impulse Voltage	4 - 8 KV

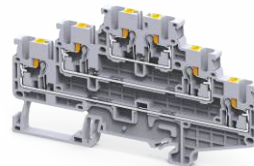
## Product Range -



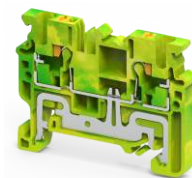
Feed Through



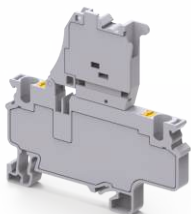
Multiple Connection



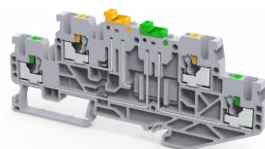
Multiple Level



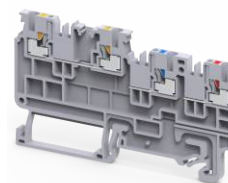
Ground / Earth



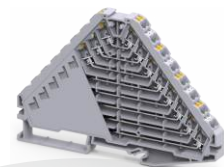
Fuse



Disconnect & Test



Sensor & Actuator



Marshalling



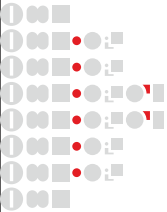
Multi Function



Side Entry



Distribution



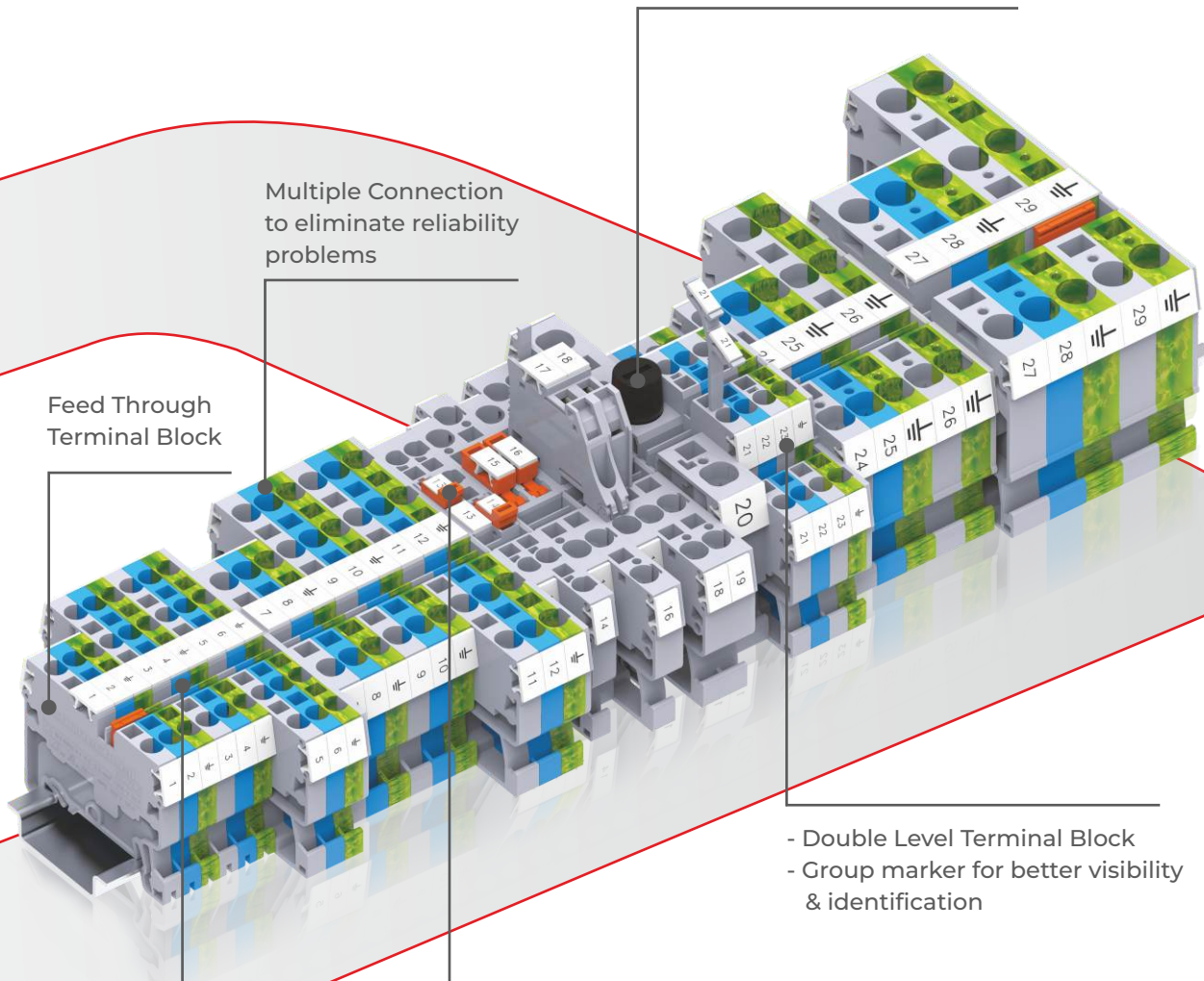
# CX SERIES

## SPRING CLAMP

### TERMINAL BLOCKS

- | Save 40% of wiring time |
- | High pull-out forces |
- | Compact size | Push-In jumpers |

Vertical Fuse Terminal Block with screw cap suitable for glass fuses of size 5 x 20, 5 x 25 & 6 x 32 mm



Multiple Connection to eliminate reliability problems

Feed Through Terminal Block

- Double Level Terminal Block
- Group marker for better visibility & identification


- Knife Disconnecting Terminal Block
- Labeling on the knife contact for easy identification

Two independent rows for bridging using pluggable jumpers. Jumpers can be marked with a felt tip pen to indicate shorted positions

CX series Terminal Blocks have an extremely compact design. These Terminal Blocks can be used in smaller control cabinets and enclosures. High quality stainless steel spring clamps provides a gas tight connection. A vibration proof, anti-loosening wire connection is achieved with this pre-stressed spring clamp system.

Multiple Level Terminal Blocks are ideal for use in applications with high density wiring. Jumpers can be marked with a felt tip pen on the recess provided on top, to clearly indicate shorted positions.

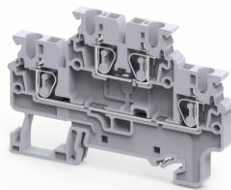
Functional Terminal Blocks such as Disconnect & Test Terminal Blocks, Fuse Terminal Blocks, Miniature & Panel Mount Terminal Blocks are available for various industrial applications.

Technical Details :	
Wire Size	0.2 - 35 mm <sup>2</sup> / 24 - 2 AWG
Voltage	1000 V
Current	Upto 125 A
Standards	IEC60947, UL1059, CSA22.2-158, IEC 60079-7
Approvals	
Rated Impulse Voltage	4 - 8 KV

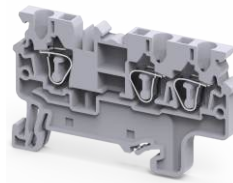
## Product Range -



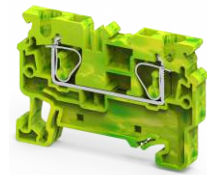
Feed Through



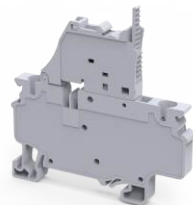
Multiple Level



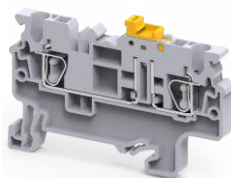
Multiple Connection



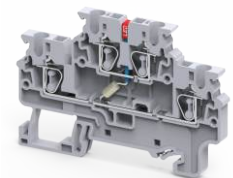
Ground / Earth



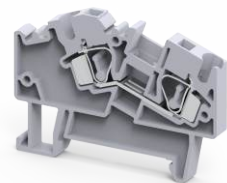
Fuse



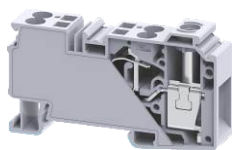
Disconnect & Test



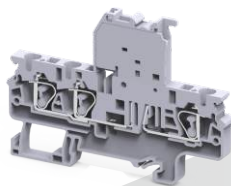
Electronic Component



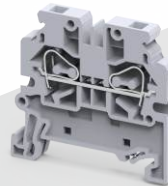
Angular



Hybrid Distribution



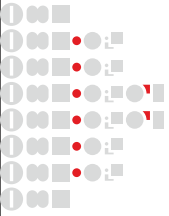
Component Carrier



Side Entry Feed Through



Side Entry Ground / Earth



# PLUGGABLE TERMINAL BLOCKS

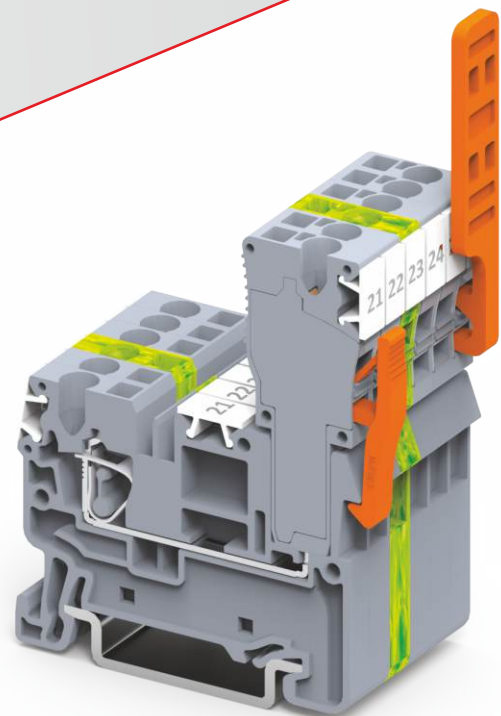
as easy as

# CHILD'S PLAY

0% Error

90% Faster

100% Secure



Scan  
for more


Pluggable  
Harnessing  
Solutions

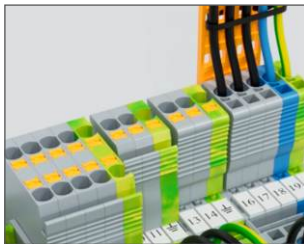
Connectwell pluggable series Terminal Blocks are an excellent solution for creating wire harnesses which ease field wire connections.

Standard jumpers and marking tags can be installed on the base terminal. The base Terminal Block has a provision for installing CX2.5PN series plugs.

Various wire and plug receptacle base terminal options are available to create unique wire harnessing solutions.

Standard green yellow ground / earth base Terminal Blocks are also available for grounding applications.

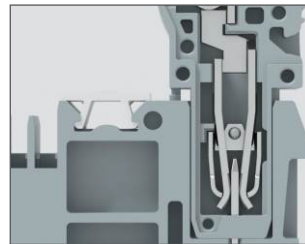
Technical Details :	
Wire Size	0.2 - 2.5 mm <sup>2</sup> / 24 - 12 AWG
Voltage	500 V
Current	Upto 24 A
Standards	IEC60947, UL1059, CSA22.2-158
Approvals	
Rated Impulse Voltage	8 KV



Spring & Push-In Connection Technology



Stackable Push-In Plugs to Enable Quick & Exact Harness Creation



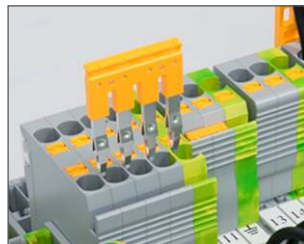
Superior Spring Contact for Quick Yet Secure Connection



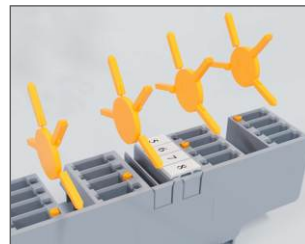
Locking Pins Help Create Absolutely Secure Connections



Strain Relief Plates to Ensure Reliability of connections



Plugs with Built-in and External Jumpering



Smart Polarization System for Error Free Wiring



Free Floating Connectors provide Superior Flexibility

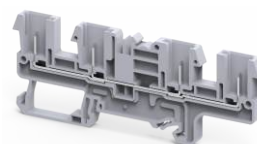
## Product Range -



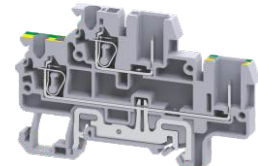
Feed Through



Ground / Earth



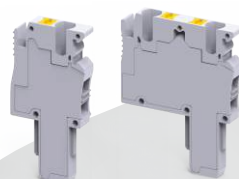
Multiple Connection



Multiple Level



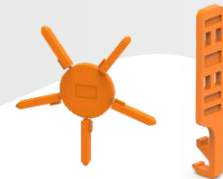
Plugs



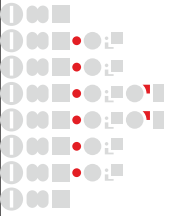
Plugs with Jumpering Facility



Sockets



Accessories



# HIGH PERFORMANCE 'CY' SERIES SCREW CLAMP TERMINAL BLOCKS

- | High pull-out forces |
- | Compact size |
- | Push-In jumpers |

- Two level Fuse Terminal Block
- Two level Fuse Terminal Block with bottom level Ground connection

Fuse Terminal Block suitable for 5 x 20 mm glass fuse, also available with fuse fail indication

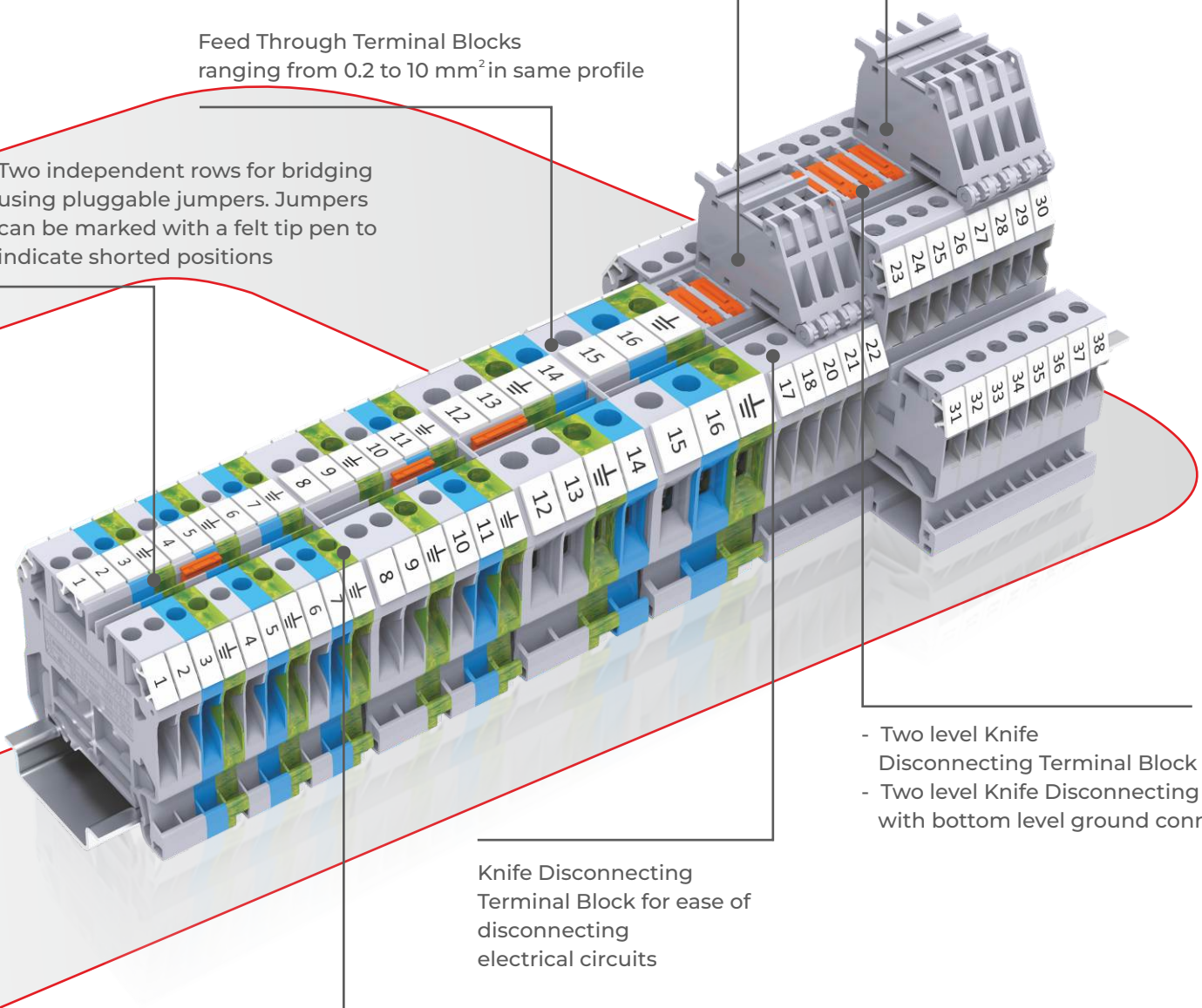
Feed Through Terminal Blocks ranging from 0.2 to 10 mm<sup>2</sup> in same profile

Two independent rows for bridging using pluggable jumpers. Jumpers can be marked with a felt tip pen to indicate shorted positions

- Two level Knife Disconnecting Terminal Block
- Two level Knife Disconnecting Block with bottom level ground connection

Knife Disconnecting Terminal Block for ease of disconnecting electrical circuits

Earthing Terminal Blocks for terminating earthing wires coded yellow-green colour as per industry standards




A high torque clamping system on the screw clamp Terminal Blocks ensures safe, gas tight connections, while cold forged, rolled threaded screws ensure highly reliable connections.

Standard feed through terminals has uniform dimension and a 3 way marking provision.

The possibility of using 2 independent rows for bridging enables the creation of various circuit combinations such as Feed through Terminal Blocks can be simultaneously shorted in an alternating configuration with fuse & Disconnecting Terminal Blocks.

Universal voltage rating of 10 - 36 V, 6 - 60 V & 110 - 240V is available on Fuse Terminal Blocks with offline indication. Both AC & DC circuits can be connected without any polarization requirement.

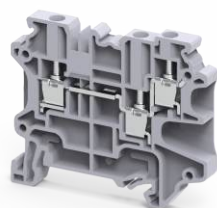
The knife disconnect terminal system enables isolation of circuits. A standard test plug can be used with these Terminal Blocks. Double level Terminal Blocks are an ideal choice for space saving applications.

Technical Details :	
Wire Size	0.2 - 16 mm <sup>2</sup> / 24 - 4 AWG
Voltage	1000 V
Current	Upto 76 A
Torque	0.4 - 2.5 Nm / 4.5 - 14 lb.In
Standards	IEC60947, UL1059, CSA22.2-158, IECEx, ATEX
Approvals	
Rated Impulse Voltage	6 - 8 KV

## Product Range -



Feed Through



Multiple Connection



Double Level



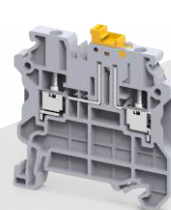
Multi Function



Ground / Earth



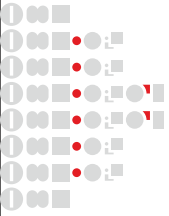
Fuse



Disconnect & Test



Electronic Component



# STANDARD CTS SERIES SCREW CLAMP TERMINAL BLOCKS

- | Safe Wiring | Compact Size |
- | Connection Reliability |
- | High Pull-out Forces |

- Fuse Terminal Blocks in 8 mm and 6 mm pitch
- Universal voltage rating of 6-60 V & 110-240 V available for offline indication

Sliding type Disconnecting Terminal Block for current transformers & power meters

Auxiliary Terminal Block for providing extra connection point for indicator or contractor application.

Knife Disconnecting Terminal Block for ease of disconnecting electrical circuits

Earthing Terminal Blocks for terminating earthing wires coded yellow-green colour as per industry standards

Feed Through Terminal Block range upto 120 mm<sup>2</sup> wires

Sliding jumper for CT shorting

Coloured test sockets for insertion of Test Probes

2 Level and 3 Level Terminal Block for high density wiring application

Feed Through Terminal Block for connecting wires as small as 0.2 mm<sup>2</sup>

Feed Through Terminal Blocks are the most versatile terminals for Control, Automation, Instrumentation and Power Distribution applications.


The terminals with ATEX & IECEx approval can be used in potentially explosive atmosphere.

Multiple Level Terminal Blocks are ideal for use in applications requiring high density wiring.

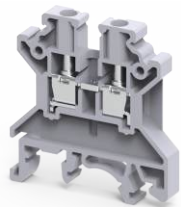
Triple level Terminal Blocks are also an ideal choice for control systems where sensor and actuator applications are involved.

Different variants such as Disconnect Terminal blocks, Fuse Terminal Blocks, Miniature and Panel Mount Terminal Blocks are available for varied industrial applications.

CHV series is specially designed for extremely high voltage (1500 VDC) applications.

Technical Details :	
Wire Size	0.2 - 120 mm <sup>2</sup> / 22 - 250 KCMIL
Voltage	1000 V
Current	Upto 269 A
Standards	IEC60947, UL1059, CSA22.2-158, IEC 60079-7
Torque	0.4 - 6 Nm / 4.5 - 90 lb.In
Approvals	
Rated Impulse Voltage	4 - 8 KV

## Product Range -



Feed Through



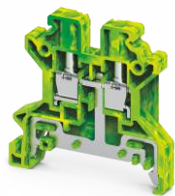
Multiple Level



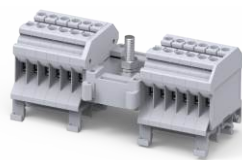
Multiple Connection



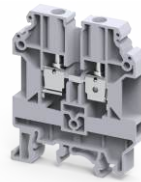
Fuse



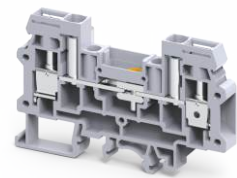
Ground / Earth



Distribution



High Voltage



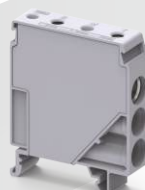
Disconnect & Test



Spring Loaded



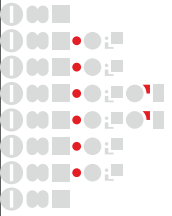
Thermocouple



Lighting Pole Terminal

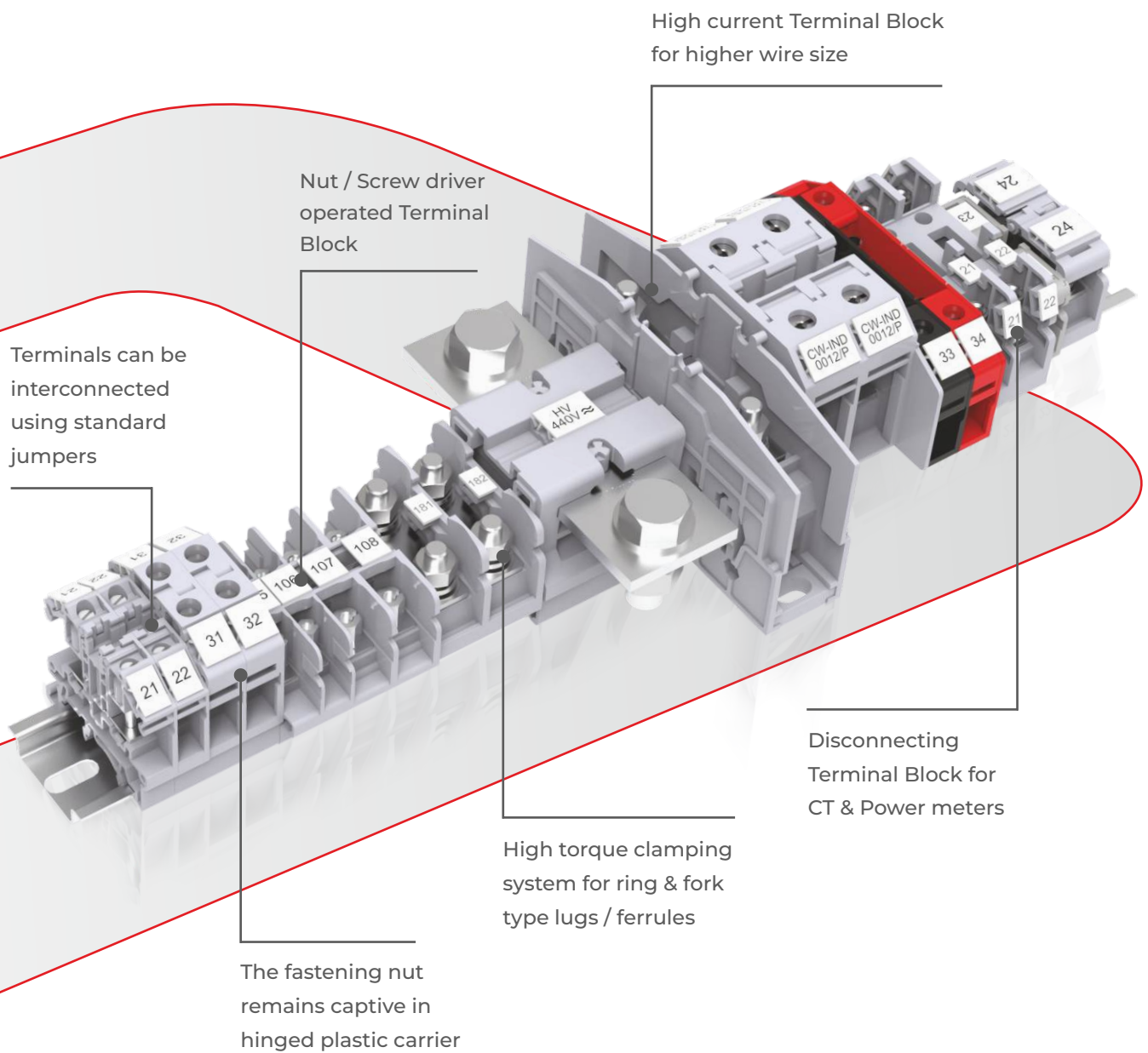


Electronic Component



# STUD / BOLT TYPE TERMINAL BLOCKS

- | Safe and Reliable |
- | Robust Connections |
- | Ring / Fork Lugs | Vibration Proof |



Stud Type Terminal Blocks are used in applications subject to severe vibration. Connection is made by crimping the wire on a ring / fork lug which is screwed on to the flat current bar.

The range includes conventional bolt type Terminal Blocks and IP20 shock protected terminal systems. These Terminal Blocks can be operated by a regular screw driver or a standard nut driver. In some of the blocks the fastening nut is captive in its carrier and connection is made by lifting the carrier, inserting the wires crimped on lugs and the carrier is then snapped back into position. The nut is then fastened using a screwdriver to complete the connection. Internal and External shorting links / jumpers are available for connecting multiple Terminal Blocks. The disconnecting Terminal Blocks range are used for measuring, control and regulatory circuits. The Power Terminal Blocks are used for wires with large cross section. These Terminal Blocks have specially designed mounting feet that provide a tight grip when snapped on the DIN Rail.

Technical Details :	
Wire Size	0.5 - 300 mm <sup>2</sup> / 22 - 600 kcmil
Voltage	1000 V
Current	Upto 520 A
Torque	0.5 - 35 Nm / 4.5 - 310 lb.In
Standards	IEC60947, UL1059, CSA22.2-158, VDE
Approvals	       
Rated Impulse Voltage	8 KV

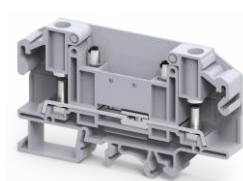
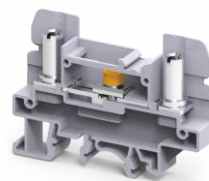
## Product Range -



Feed Through



Disconnect & Test

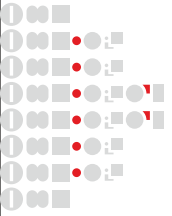


Power



High Current



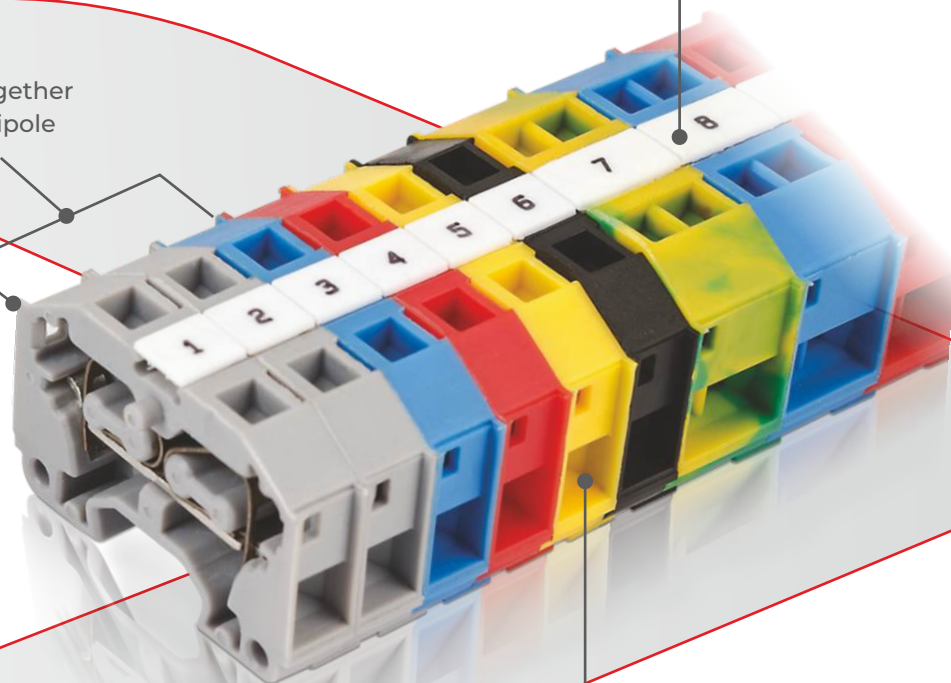


# MINIATURE & PANEL MOUNT TERMINAL BLOCKS

- | Miniature form factor |
- | Stackable | Compact Size |
- | High Pull-out Forces |

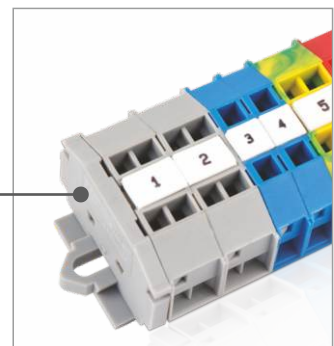
Can stack together  
to form multipole  
connectors

Top marking for  
clear visibility



Easy to use side entry  
spring clamp  
Terminal Blocks


Fixing flange on  
Terminal  
& End Plate  
for Panel mount



CM series Terminal Blocks have a side wire entry configuration. These blocks are an excellent solution for extremely compact wiring applications. The Terminal Blocks are "modular" and can be stacked to form multipole assemblies. The stacked assemblies can be mounted on the panel surface using an End Plate at one end only.

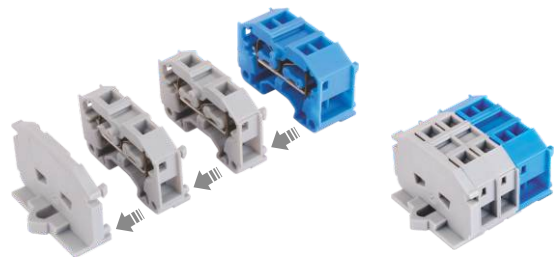
These Terminal Blocks are perfect solution for industries like Control Transformer, Elevators, Junction Boxes and applications with limited wiring space. These are also used inside railway coaches for lighting application.

These Terminal Blocks are used in extremely high temperature applications such as hot melt glue guns, furnaces, heaters, process equipment and machinery. These Ceramic Terminal Blocks have an operating temperature range of -40° to 2300°C.

Technical Details :	
Wire Size	0.2 - 4 mm <sup>2</sup> / 24 - 10 AWG
Voltage	1000 V
Current	Upto 32 A
Standards	IEC60947, UL1059, CSA22.2-158, IEC 60079-7
Approvals	
Rated Impulse Voltage	6 KV



Panel Mounting on any Surface with help of Screws.



Modular assembly with stackable end plate

## Product Range -



Miniature - Screw



Miniature - Spring



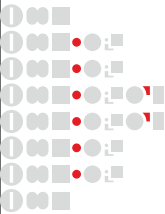
Panel Mount - Spring



Panel Mount - Screw

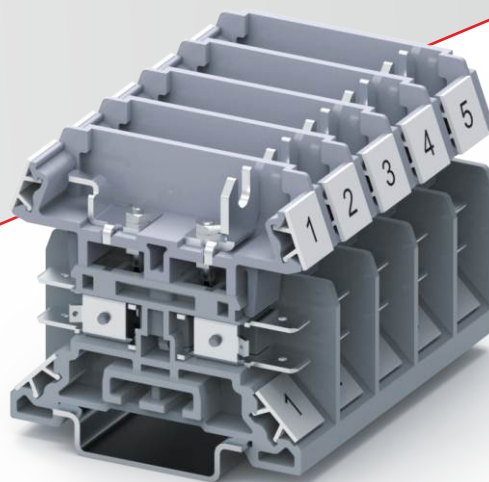
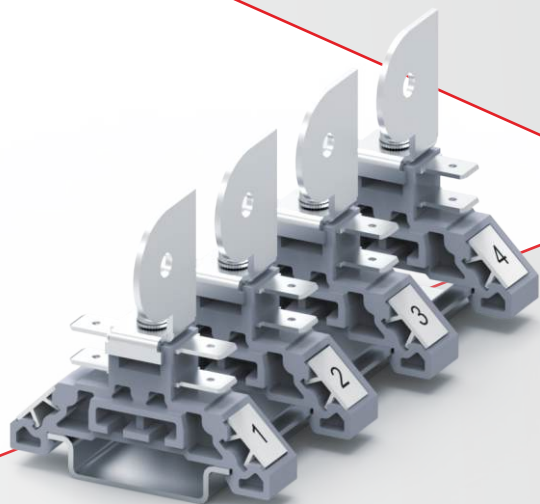
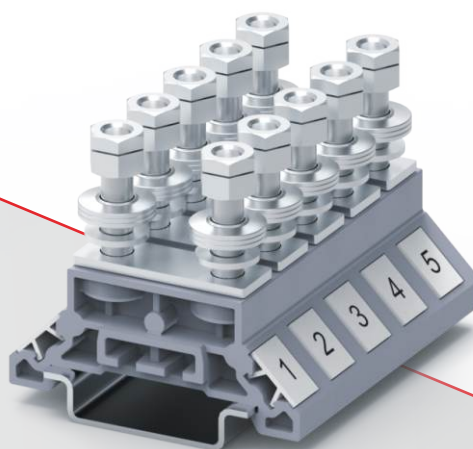
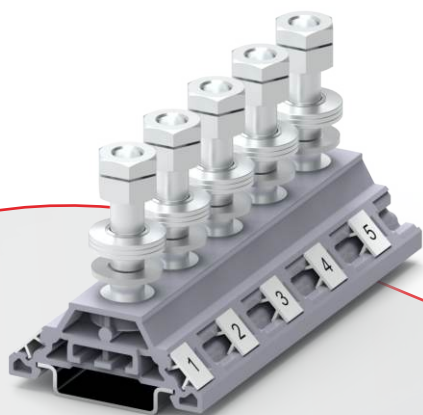


Ceramic Terminals



# TERMINAL BLOCKS FOR ROLLING STOCK

- | SINGLE & DOUBLE STUD |
- | VIBRATION PROOF |
- | PERMANENT CONNECTIONS |



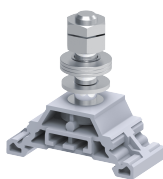
Connectwell Stud & Bolt Type Terminal Blocks are specifically designed to meet the demanding requirements of the rolling stock / railway industry, ensuring exceptional performance, reliability, and safety. Engineered with a unique wire clamping method, these terminal blocks offer superior connection integrity, making them ideal for critical metro and rail applications. Their robust construction ensures long-lasting performance, even in challenging environments.

Compliant with NF-F standards, these terminal blocks meet the stringent requirements of railway operations, including high resistance to mechanical stress and environmental factors. They are meticulously designed to conform to IEC 61373 standards, guaranteeing excellent shock and vibration resistance, which is essential for maintaining operational stability in high-speed and heavy-duty rolling stock. Additionally, adherence to EN45545 fire safety specifications ensures the highest levels of passenger and equipment safety.

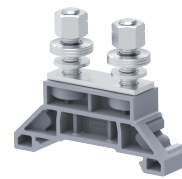
These terminal blocks are the perfect solution for modern rail systems, combining innovation and reliability. Whether used in passenger coaches, locomotives, or freight wagons, they provide secure and efficient electrical connections, reducing maintenance needs and downtime. Their compliance with international standards reflects our commitment to delivering quality products that meet the evolving demands of the railway industry.

Technical Details :	
Wire Size	0.5 - 120 mm <sup>2</sup> / 14 - 250 kcmil
Voltage	800 V
Current	Upto 269 A
Standards	NF-F61017, IEC61373
Compliance	EN45545
Rated Impulse Voltage	8 KV

## Product Range -



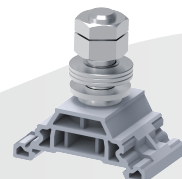
Single Stud



Double Stud



Electronic Component



High Current

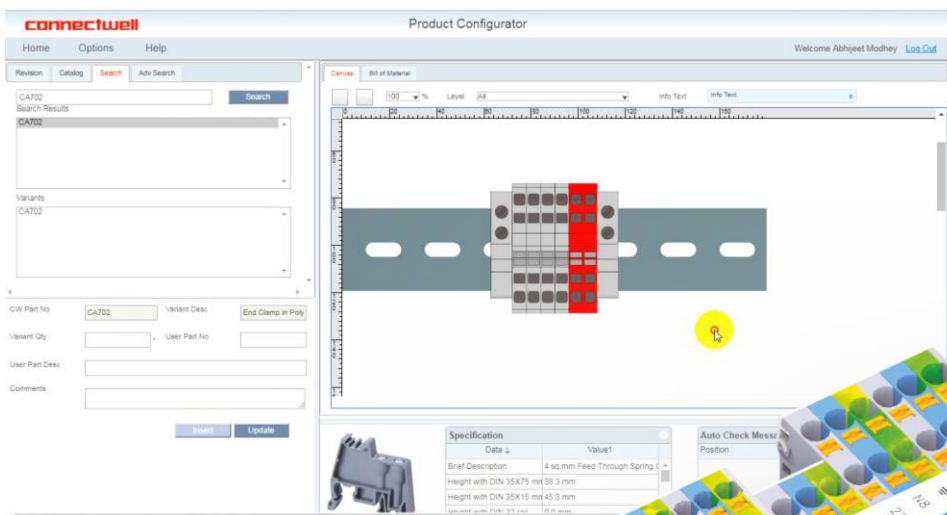
# VIRTUAL **config**

DESIGN

DOCUMENT

MANUFACTURE

DELIVER



## FEATURES

- Free online tool for Terminal Block configuration
- Easy to use software, menu driven, no CAD licencing required
- 2D & 3D output drawing generation
- Complete BOM documentation
- Short manufacturing lead time
- Standardized packaging for configured rail assemblies



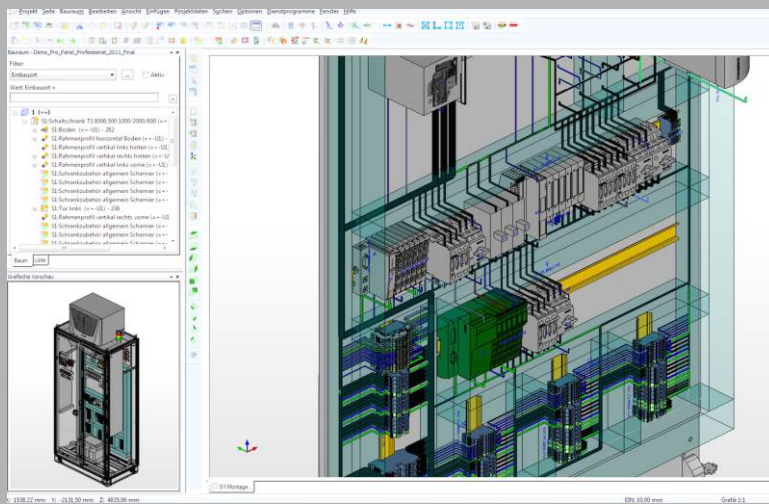
Scan to Login  
Virtual Config

<http://www.connectwell.com/Global/product-configurator.aspx>

# CONNECTWELL

is available on **ePLAN** Data Portal

Get started on the path to improving the engineering design times, costs and quality for Electrical, Instrumentation & Control Systems



## Advantages of ePLAN

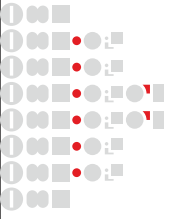
- Directly into (NC) production
- Wiring made easy
- Top Class Workflow
- Quick Start
- Flexible Layout
- Safe Planning
- Consistency for Lively Exchange



## What is ePLAN Data Portal ?

ePLAN software & services is one of the world leading service providers for developing CAx configuration and Mechatronics solutions.

ePLAN offers electrical engineering design software that provides innovative options for the planning, documentation and management of electrical design projects with nearly 7,80,000 device data from more than 200 manufacturers integrated within the ePLAN data portal.



# CRM SERIES - HIGH PERFORMANCE RELAY MODULES

BUILD TO LAST



The Connectwell High Performance Relay Module is a space-saving product with electro-mechanical relays for high current switching. The modular relay consists of a relay and relay socket. It also has the choice of an LED module or an LED on relay. These modular relays are employed in switching, protection and isolation applications. The modular relay offers a better switching capacity and a longer life span when compared to the Slim and Relay modules.

Technical Details :	
Product Range	CRL Series - Relay, CRS Series - Socket, CRM Series - Relay with Socket
Changeover	Miniature: 1CO, 2CO      Power: 2COP, 4CO
Input Voltage	DC: 12V, 24V, 48V, 110V, 220V      AC: 24V, 110V, 230V
Contact Rating	Miniature: 1CO: 10A      2CO: 5A Power: 2COP: 7A & 12A      4CO : 5A & 6A
Indication	LED & Mechanical Flag Indicator
Trouble Shooting	Manual Override Test Button
Connections Technology	Screw connection
Mounting	DIN Mounting
Accessories	Retaining Clip, LED Module, Marker Card

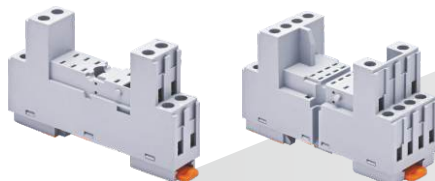
**Features:**

- > Compact and DIN Mounting sockets
- > Universal Polarity
- > V0 GRADE Flammability Rating Housing
- > More than 10 Million Mechanical Life
- > Three way marking system
- > Ease of connection with standard screw connections
- > Socket available with LED module / without LED modules
- > IP20 Finger safe design
- > Variants with built-in LED
- > Free wheeling diode protection.
- > Mechanical Flag Indicator
- > Lockable test button option

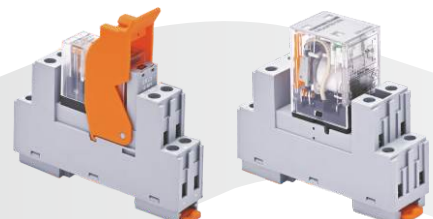
**Product Range - Relay Sockets**



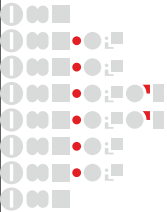
CRL SERIES RELAYS



CRS SERIES SOCKETS

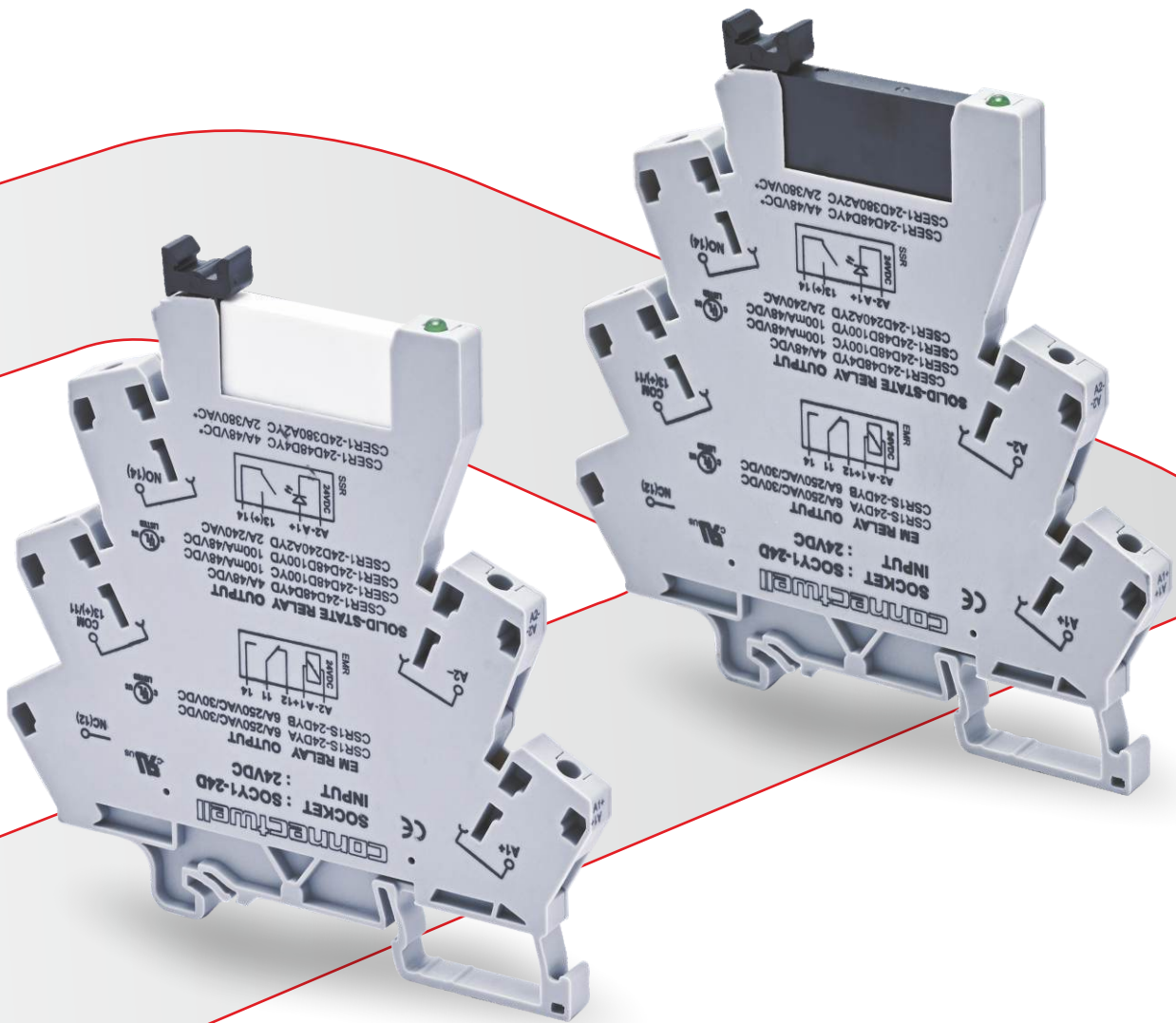


CRM SERIES SOCKET + RELAY




# CSR SERIES - COMPACT SLIM RELAY MODULES

BUILD TO SAVE PANEL SPACE



In today's high-tech world it has become inevitable that control panels will progressively reduce in size, forcing us to do a lot more in a lot less space. Connectwell brings you the right solution for such problems in the form of Slim Relays for switching and control applications. Conventional Relay Modules occupy about 20 mm per channel but with Slim Relays the same can be achieved in just 6 mm.

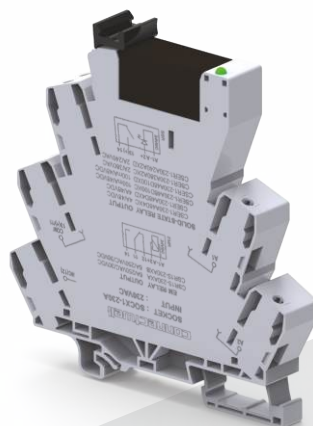
Technical Details :	
Type	Electromechanical Relay / Solid State Relays
No of changeovers	1, 2, 1 NO
Input Voltages	DC - 5 V, 24 V AC - 230 V AC/DC - 12 V, 24 V, 48-60 V, 120 V, 230 V
Output Ratings	EMR: 1CO - 6A@250VAC/30VDC 2CO - 8A@250VAC/30VDC SSR: 1NO - 100 mA @ 48 VDC, 4 A @ 48 VDC, 2 A @ 380 VAC
Contact Material	AgSnO2
Positive / Negative bussing Possibility	By using JX series jumpers
Relay Protection	by freewheeling diode, polarity protection, RC Protection
Housing material	PA66
Connection possibility	Screw connection / Spring clamp connection
Approvals	

**Features:**

- > Available in 1CO & 2CO
- > Variety of operating voltages – 5,24,48-60, 110, 230 VAC/VDC
- > Pluggable relays
- > Possibility of using Electromechanical Relays as well Solid state Relays
- > Low coil drive current
- > Possibility of shorting adjacent relays with pluggable jumpers
- > Screw, Spring & Push-In connection possibility
- > International approvals on relay socket and relay

**Product Range -**

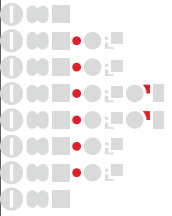
- | Slim Relay
- | Slim SSR



Slim Relay 2 CO

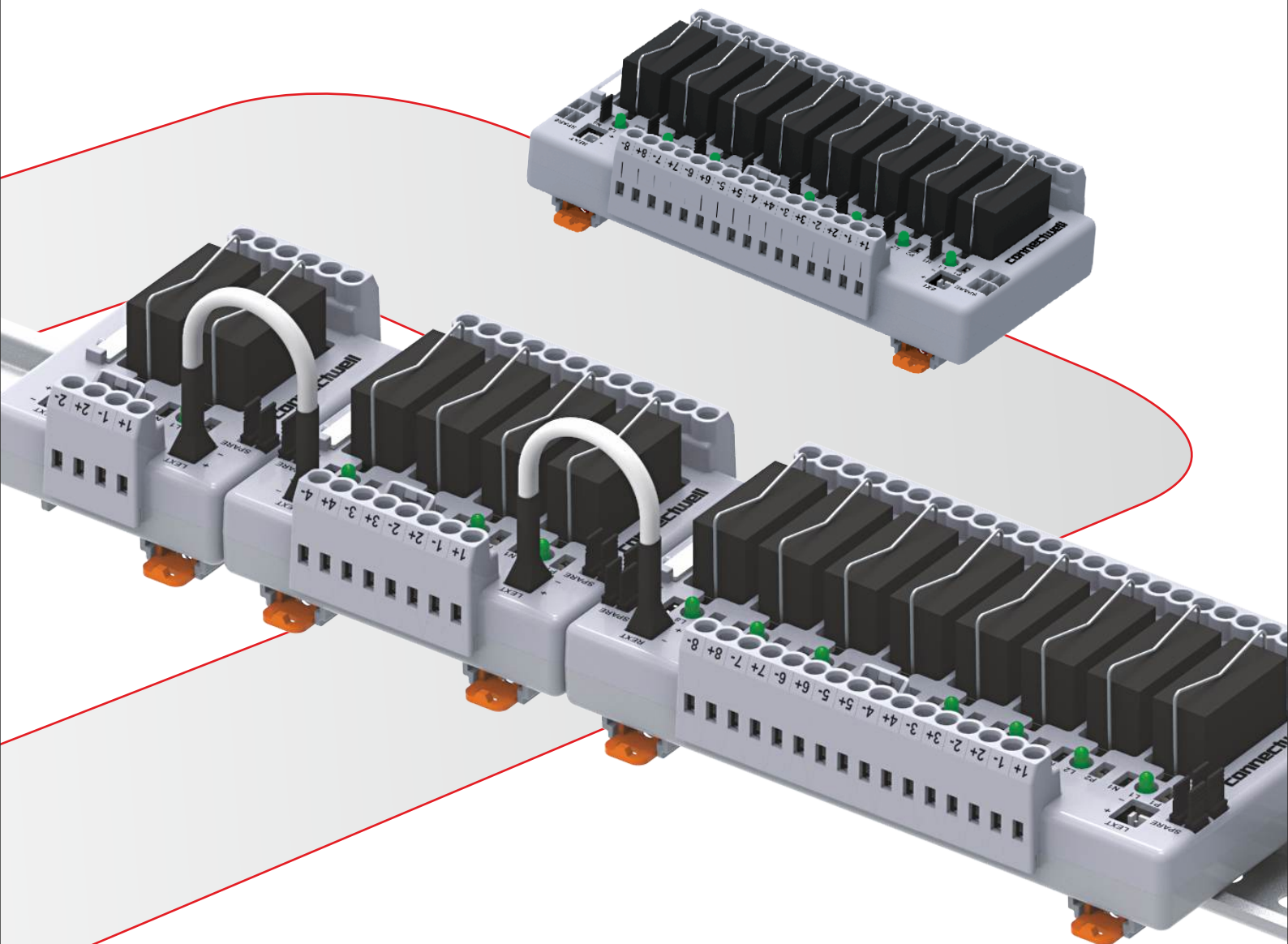


Slim Relay Adaptor



# CIMRE SERIES - NEXT GENERATION RELAY INTERFACE MODULES

BUILD TO DELIVER VALUE



Connectwell Next Generation Relay Boards offer compact and easy to implement solutions to interconnect sensors, actuators, controlling / monitoring systems together. Connectwell DIN Rail mounting relay modules are an excellent solution for transmission of electric signals between PLC / DCS system and field actuator / sensor.

These boards provides electrical isolation between control and load circuits with the help of electromechanical relays. These relay cards comes with Variety of Operating Voltages & easy to replace pluggable relays with relay base. There is a possibility of Bussing (Jumpering) relay input in common negative or common positive configurations & LED Indication to denote relay actuation.

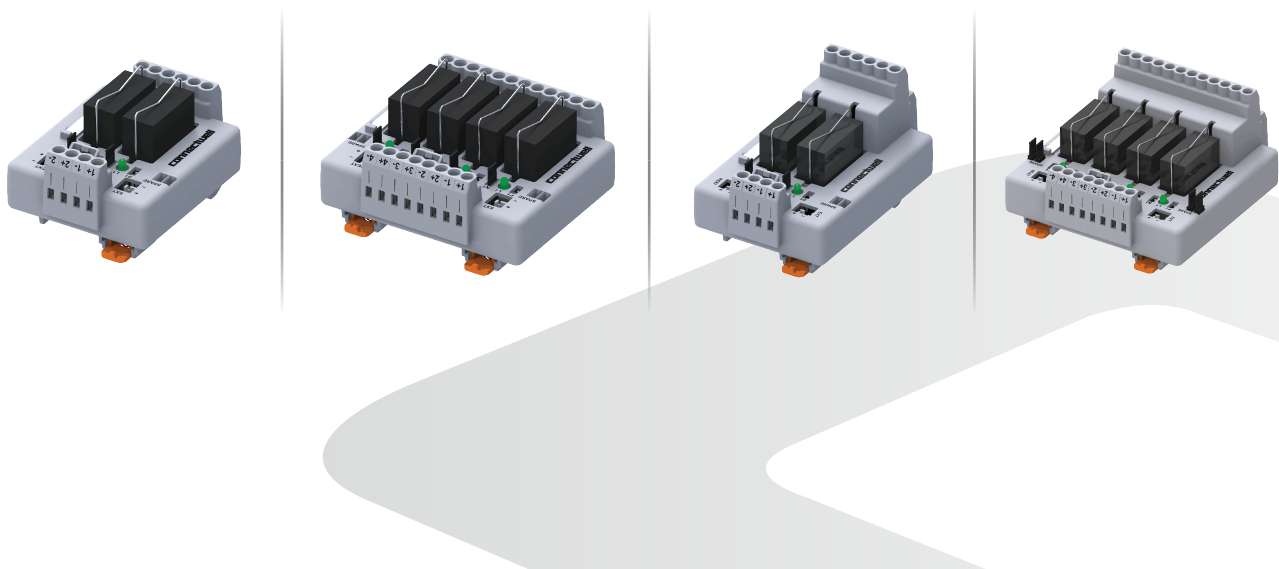
Technical Details :	
No of channels	2,4,8
Available Coil Voltages	12VDC, 24VAC/VDC, 110VAC/VDC, 230VAC/VDC
Number of Changeovers	1, 2
Contact Ratings	10A @230VAC/30VDC (1CO), 5A @230VAC/30VDC (2CO)
Connections	Screw Connection
Common Positive / Common Negative	Jumpering possibility
Protection	Freewheeling diode / Fuse protection

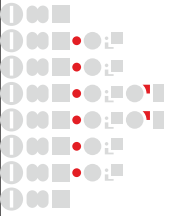
**Features:**

- > Fully-enclosed IP20 rated design
- > Custom configurations up to 32 channels
- > True 10 Amperes performance
- > Ease of wire entry, clearly visible status indicators
- > Pre-installed long tail jumpers
- > Industry first long-life laser marking for circuit identification
- > Compact and secure mounting
- > Additional all-axis marking provision
- > High quality standards and approvals

**Product Range -**

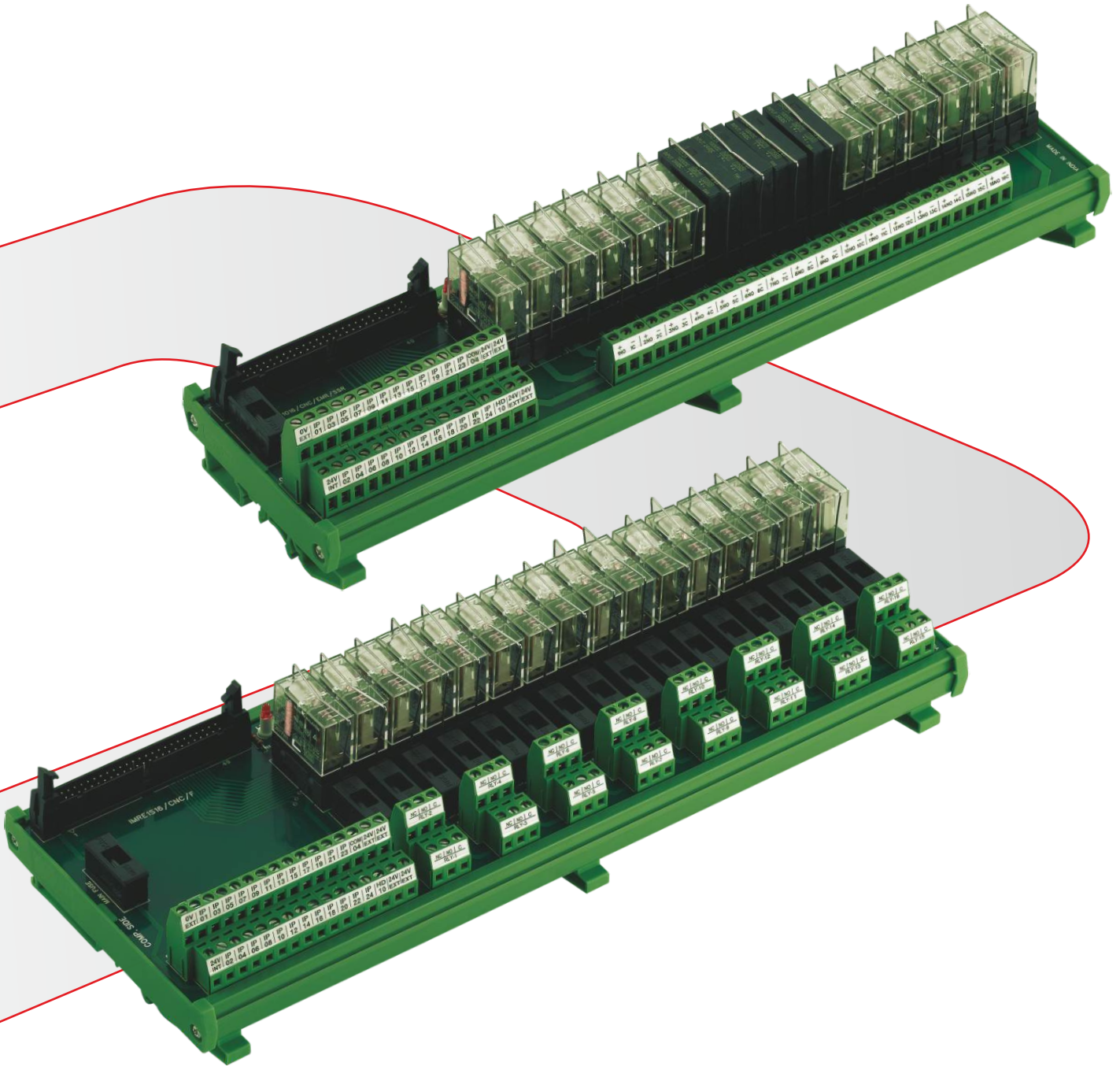
- | Standard Relay Modules in 1 CO & 2 CO





# IMRE SERIES - CUSTOM INTERFACE MODULES

BUILT JUST FOR YOU



These Custom Relay Interfaces simplifies wiring by accommodating channel signal through IDC/FRC or DSUB connectors. These interfaces are used as protection for DI and DO modules in PLC/DCS applications.

IMRE1SS16/CNC and IMRE1SS16/CNCSSRx Interfaces from Connectwell ease PLC wiring in CNC machines. These interfaces provide connection possibility for both the input and output side of a PLC in a single interface and are compatible with various PLCs from Fanuc, GE, Mitsubishi, Schneider & Siemens.

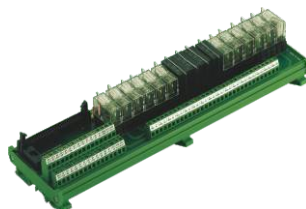
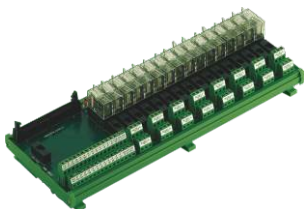
Technical Details :	
Type	Electromechanical Relay / Solid State Relays
Coil Voltages	5VDC, 12VDC, 24 VDC, 110VAC, 230VAC
Coil connection	IDC/FRC Connection / Screw connection
Contact Connection	Screw connection
Configured for	Fanuc, GE, Mitsubishi, Schneider, Siemens System
Protection	Diode and Fuse protection
Applications	Easy compatibility for the machines incorporating PLC

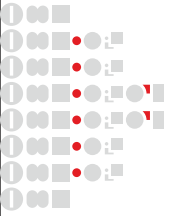
**Features:**

- > Variety of operating voltage
- > Pluggable electromechanical relays / Solid State Relays
- > Protection by freewheeling diode and fuse
- > PVC/V0 grade housing material
- > DIN Rail mount

**Product Range -**

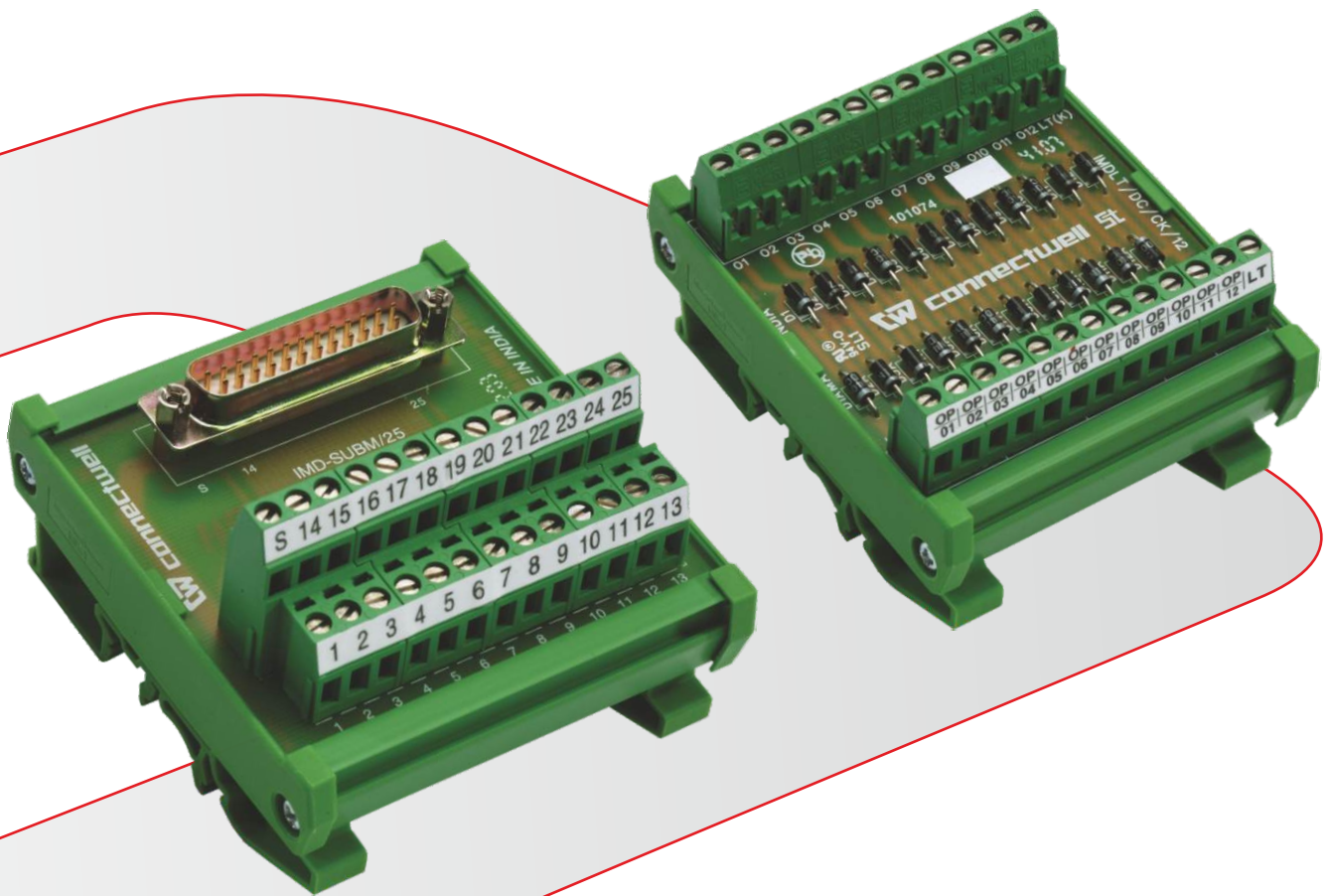
- | CNC Interface | CNC SSR Interface | DI/DO Interface for DCS Applications |
- | CNC with Fuse Interface | CNC SSR with Fuse Interface |
- | Relay interface with DSUB |





# PASSIVE & PROTECTION

## INTERFACE MODULES



Connectwell offers DIN Rail mountable passive & protection modules. These modules are used to convert various connection types. Connectwell IDC / FRC & DSUB modules facilitate quick connections of initiators, actuators and sensors to PLC I/O modules with the aid of pre assembled cable harness. DIN Rail & Panel mounting Component Carrier modules are suitable for building electronic prototypes.

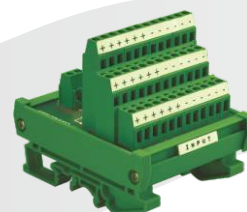
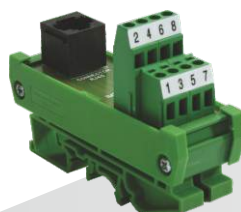
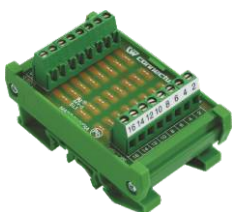
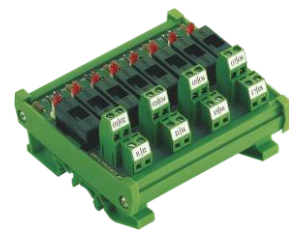
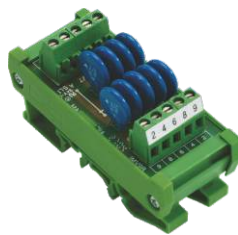
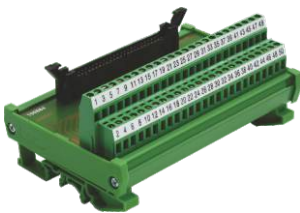
Technical Details :	
Input Connection	IDC/FRC, DSUB,RJ45
Output Connection	Screw Connection / Spring cage connection
Mounting	DIN Rail mounting
No. of channels	Standard as per the Input connection

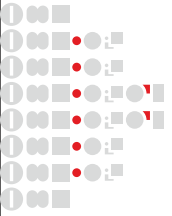
**Features:**

- > Standard Number of channels
- > DIN Rail mount
- > Housed in V0 fire retardant grade PVC mounting track
- > Ease of connection with the use of standard screw connection or spring clamp connection PCB Terminal Blocks
- > Available with all standard pin configurations
- > Available with LED indication
- > Possibility of mounting circuit components between the pins of IDC connectors

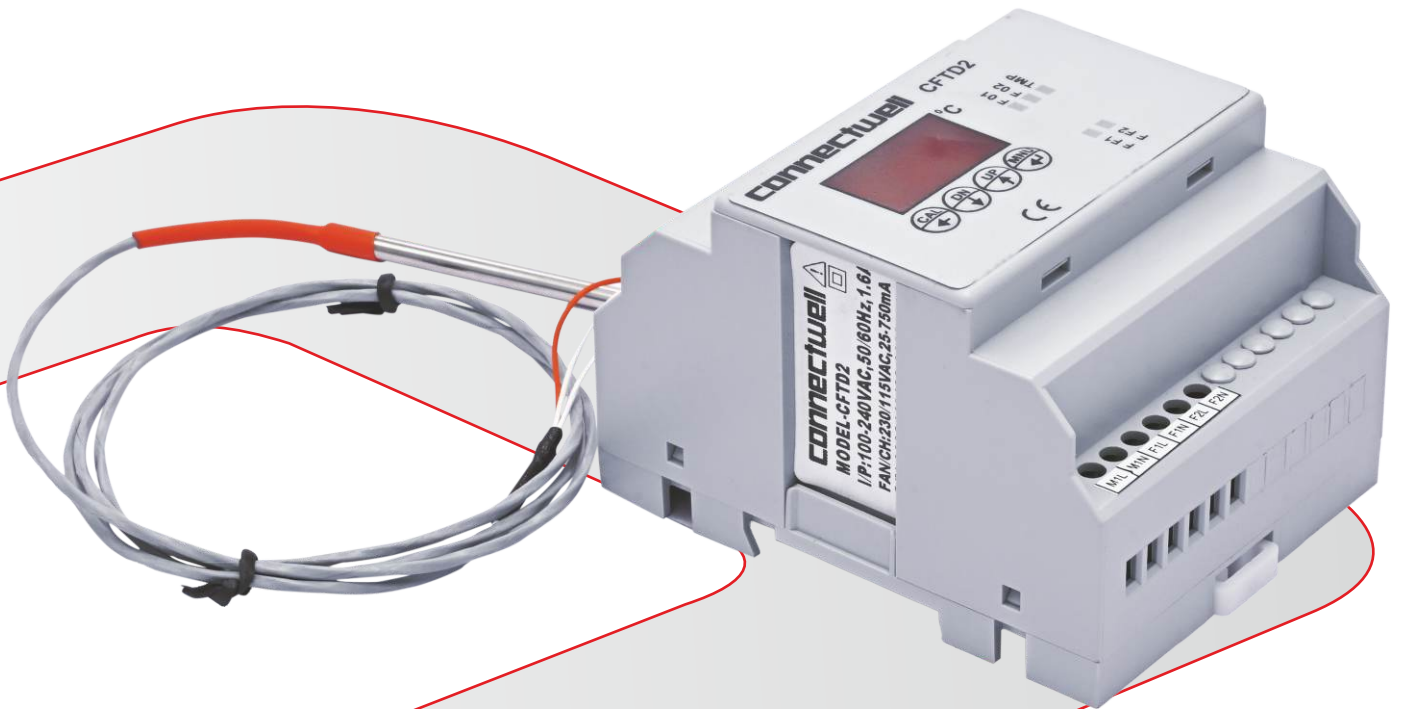
**Product Range -**

- | DSUB Module | IDC/FRC Module | Diode Module | Distribution Module |  
 | Component carrier Module | RJ 45 Module | Fuse Module | MOV Module |





# FAN MONITORING & CONTROL DEVICES



Current day semiconductor technology used in components like thyristors, breaking units, PLC, VFD etc. creates high amount of heat inside control panels. Fans are used for air circulation to avoid heat buildup. In case of fan failures, heat emitted by these semiconductor components creates hot zones inside the control panel. Some of the devices inside the panel are temperature critical and the efficiency of these devices goes down with the increase in temperature. Fan monitoring devices are equipped to check the running status of cooling fans inside the control cabinet.

Technical Details :	
Input Connection	Screw Connection
Mounting	Din Rail Mounting
No of Fans	1, 2 & 4 Fan Monitoring
Temperature Measurement	Yes
Output	Fan Fault, Temp Alarm, 4-20 mA
Protection	Fuse protection
Fan Rating	25 - 750 mA

**Features:**

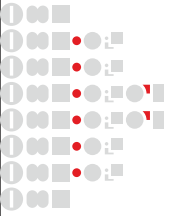
- > Programmable fan selection
- > Auto / Manual calibration
- > Power & Fan redundancy
- > Compact & Standard DIN Rail mounting
- > Isolated fan monitor channels
- > Adjustable Over temperature set point
- > 4-20 mA current output
- > Programmable Temperature range for 4-20 mA transmitter
- > Fuse protection for each FAN monitor
- > LED Indication for Fan status, Temperature status
- > Alarm contact for FAN failure, Over-temperature
- > Shuffling of fan in Redundancy to avoid choking of non-operational fan for longer time

**Product Range -**

2 Fans | 4 Fans ( 2 Main + 2 Auxiliary) | 4 Fans ( 2 Main + 2 Auxiliary) with Power Redundancy

Description	Cat. No.
1 FAN / 2 FANS	CFTD2
4 FANS	CFTD4
4 FANS WITH POWER REDUNDANCY	CFTDPR4





# POWER SUPPLIES



## GENERAL FEATURES

- High Power Efficiency
- In Built Power Factor Correction Circuit\*
- Cooling By Convection: No Fans Reduce The Chance of Failure\*
- Fully Encased IP20 Plastic / Metal Body
- 2 Years Warranty

## INPUT FEATURES

- Extremely Accurate Line Regulation
- Full Range Input Selection from 85 to 264 VAC or Automatic Input Selection between 115 VAC / 230 VAC
- Input Fuse Protection
- Input Over Voltage Protection
- Internal Input Filter to disallow harmonics and EM interference to pass to the supply line

## OUTPUT FEATURES

- Very Accurate Load Regulation
- Output Short Circuit Protection
- High Output Voltage Accuracy
- Possibility of Trimming Output Voltage
- Output Ready Signal\*
- DC ON Signal

\* These features are available in specific models

## Standard Single Phase Switch-Mode Power Supplies

Connectwell's range of DIN Rail Mounting, Single Phase Switch-Mode Power Supplies is available in a wide variety of power ratings, ranging from 50 - 480 W.

Housed in aesthetically appealing IP20 protection class plastic or metal casings, these Power Supplies are designed for very high efficiency along with various forms of input & output protection.

Their high output accuracy along with superior load and line regulation make them an ideal choice for varying industrial applications.

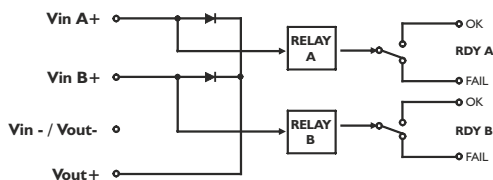


## Power Supply Redundancy Module (Diode O Ring Module)

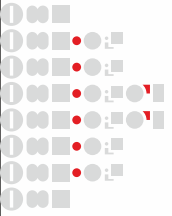
These redundancy modules are required to connect two or more Power Supplies to the application load so as to safeguard it against failure of a single Power Supply.

At any given point only one of the Power Supplies connected to these modules is further connected to the load. Only on failure of one of the Power Supplies does the other Power Supply come into action.

These redundancy modules have advanced features like IP20 class fully shrouded housing and current ratings as high as 20 A.



Circuit Diagram



# FLEXIBLE CONDUITS



These conduits are designed for a wide range of applications. Available in metallic and non-metallic material, Each conduit offers its own blend of flexibility, strength, temperature range and protection. When combined with Controlwell Conduit Glands they offer IP68 protection to cables housed inside. They come with added benefits of being UV Resistant, High Impact Resistance, Halogen Free, Acid Proof and Flame Retardant in nature. With renowned approvals like UL, VDE, CSA, CE marking & RoHS compliant these conduits are an ideal choice for cable protection.

Technical Details :	
Material	Polyamide 6/12, Polyethylene, Polypropylene, Galvanized Steel (PVC Coated) & Stainless Steel
Temperature Range	<b>Metallic:</b> -50°C to + 300°C / <b>Non Metallic:</b> -40°C to 105°C
Protection Class	IP 68 / IP 67 / IP 54
Resistant	Alcohol, Benzol, Mineral Oil, Diesel Fuel, etc.
Approvals	CE, UL, RoHS

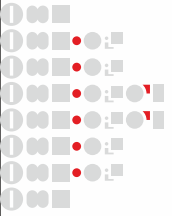
**Features:**

- > Flame retardant, Halogen-free material composition
- > Corrugated design with high bending radius
- > High tensile strength & UV-Stable materials
- > Stainless steel and Galvanized steel options for corrosion resistance
- > Robust construction for durability
- > Slitted and Unslitted options for ease of installation
- > Liquid-tight options with high ingress protection - IP68

**Product Range -**

- | Polyamide Flexible Conduits | Polyethylene Flexible Conduits Slitted / Unslitted |
- | Twin Slitted Conduits | Lockable Flexible Conduits | Flexi Cover Conduits |
- | Galvanised Steel Flexible Conduits | Liquid Tight PVC Coated Smooth Conduits |
- | Plastic Sealtite Conduit | Stainless Steel Square Locked Conduits |





# CONDUIT GLANDS & ACCESSORIES



Controlwell offers an exhaustive range of Conduit Glands (Connectors) and Accessories. These glands are available in a wide variety of sizes and orientation to suit straight, 90° and 45° cable entries. These conduit glands are available with PG, Metric, PF, NPT and UNEF thread systems.

For applications where the mounting surface is not threaded, glands with flanges can be used. A wide range of special glands which secure the conduit as well as the cable passing through it is also available.

Accessories like couplers, mounting clips and tube end caps compliment the range of Conduit Glands ensuring high IP protection class and ease of installation.

Technical Details :	
Material	Polyamide, Brass Nickel Plated & Stainless Steel
Temperature Range	<b>Metallic:</b> -45°C to +105°C / <b>Non Metallic:</b> -40°C to 105°C
Protection Class	IP 68 / IP 67 / IP 54
Resistant	Alcohol, Benzol, Mineral Oil, Diesel Fuel, etc.
Thread Types	PG, Metric, NPT
Approvals	CE, UL, VDE, RoHS

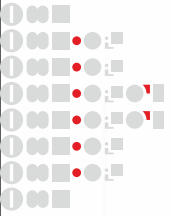
**Features:**

- > IP68 Rated Ingress Protection
- > Straight and 90° Bend Design Options
- > Threaded Design with Locknuts for Ease of Installation
- > UV and Corrosion Resistance
- > Durable Material Construction for Robustness
- > Couplers (T, Y, V, Straight) for Connectivity
- > End Caps with Punch-Out Option for Sealing Solutions
- > Mounting Clips for Secure Attachment

**Product Range -**

- | Standard conduit glands | Connector to secure cables & conduits |
- | Straight connector with female thread | Metal conduit glands |
- | Glands for liquid tight conduits | Straight conduit glands for AMPC conduits |
- | Straight, 90° elbow and 45° glands available |





# POLYAMIDE & METALLIC CABLE GLANDS



Polyamide Cable Glands are easy to use and provide high-quality strain relief with a wide clamping range. These glands are manufactured from a high-grade polyamide material, an essentially strong material that is self-extinguishing and corrosion resistant. The cable glands offer IP68 level protection and are suitable for standard industrial applications. These Cable glands are manufactured and tested according to DIN EN 62444. The lamellar construction of glands provides an excellent grip on the cable.

Metallic Cable Glands are available in nickel plated brass and stainless steel material and offer IP68 level protection preventing ingress of dust and water. They are suitable for use in environments demanding high levels of chemical and mechanical stability; including measurement and control applications. These cable glands offer optimum strain relief and have lamellar designed plastic inserts for protection against distortion. Cable glands with long thread length or reduced clamping range are available on request. These cable glands are appropriate for harsh environments and heavy machine operating; the working temperature could range from -40°C to 100°C. Silicone sealing ring is used for high temperature and can be produced on request.

Technical Details :	
Material	Polyamide, Brass Nickel Plated, Stainless Steel
Colour	RAL 7001 (Grey), RAL 9005 (Black), RAL 7035 (Light Grey)
Temperature Range	-20°C to +100°C Continuous, 30°C to +150°C Intermittent
Protection Class	IP 68-5 Bar, 30 min
Flammability	Polyamide - UL 94 V2
Sealing Ring	CR-Chloroprene Rubber / S-Silicone
Thread Types	PG, Metric, NPT
Approvals	CE, UL, CSA, VDE, DNV

#### Features:

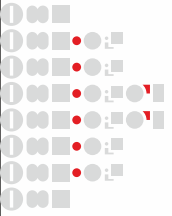
- > Halogen-free, flame-retardant, and UV-resistant material
- > Single-layer and double-layer sealing mechanisms
- > Compatibility with flexible and armoured cables
- > Corrosion-resistant construction
- > EMC variants with built-in spring contact for grounding
- > Wide clamping range from 3 mm to 82 mm

## Product Range -

| Standard Cable Gland | Spiral Cable Gland | Elbow Cable Gland | Ventilation Cable Gland |

| Brass Cable Gland | Stainless Steel Cable Gland | EMC Cable Gland |





# EXPLOSION PROOF

## CABLE GLANDS, CONDUIT GLANDS & ACCESSORIES



The current international regulations for machine manufacturers (94/9/EC) and operators (99/92/EC) prescribe high safety levels. Therefore, in addition to the traditional field of electrical engineering, legally compliant explosion protection also considers all relevant mechanical components - to avoid all ignition sources, including sparks, which can result from electrostatic charges or hot spots. The ATEX - IECEx Directive besides taking into account the electrical sources of the explosion, also considers the potentially explosive concentration of gas, vapor or mist along with dust in the air. Controlwell ATEX explosion protection system features high-grade materials. The use of plastics, nickel-plated brass and Stainless Steel guarantees maximum safety.

Technical Details :	
Material	Polyamide, Brass Nickel Plated, Stainless Steel
Temperature Range	<b>Chloroprene</b> Ex d/tb -40° C to +80° C      Ex e/tb -40° C to +80° C
	<b>Silicone</b> Ex d/tb -60° C to +80° C      Ex e/tb -60° C to +140° C
Threads available	Metric, NPT
Protection Class	IP 68 - 5 Bar, 30 Min
O Ring	Chloroprene / Silicone
Equipment Marking	Ex II 2GD Ex eb IIC Gb Ex tb IIIC Db
Suitable for use in	Group II Gas Group IIC    Zone1/Zone2 Group III Dust Group    IIIC Zone21/Zone22
Sealing Ring	Chloroprene / Silicone
Approvals	IECEx, ATEX, DNV

#### Features:

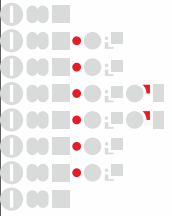
- > Compatible with armoured cables
- > Temperature-resistant design
- > Flameproof enclosure
- > Corrosion-resistant and impact-resistant materials
- > EMC variants for shielded cables

## Product Range -

| Explosion Proof Polyamide Cable Gland | Explosion Proof Triple Seal Cable Gland |

| Explosion Proof Double Compression Cable Gland | Explosion Proof EMC Cable Gland |





# CABLE DRAG CHAINS



Cable carriers, also known as drag chains or cable chains are guides designed to surround and guide flexible electrical cables and hydraulic or pneumatic hoses connected for moving automated machinery. They reduce wear and stress on cables and hoses, prevent entanglement, and improve operator safety. Cable carriers may be arranged to accommodate horizontal, vertical, rotary and three-dimensional movements.

Controlwell cable drag chains are made with glass fiber reinforced polyamide and innovative technology in complete adherence with the international quality standards.

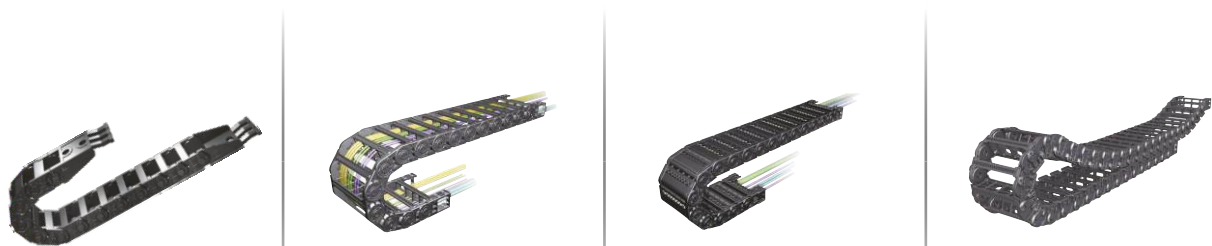
Technical Details :	
Chain Material	Glass fiber reinforced Polyamide, UL 94-HB
Temperature Range	-30° C to +130° C
Inner Height	From 10 mm to 110 mm
Inner Width	From 6 mm to 600 mm
Noise	40 dB (DIN EN 61672-1), 30 dB (DIN EN 61672-1)
Speed	6m / sec, 10m / sec
Applications	Gantry Robot, Machine Center, Textile Machine, Welding Machine, Wood Work Machine and Fabric Machine
Approvals	CE, TUV, ATEX, RoHS

**Features:**

- > Flame Retardant and Halogen-Free materials
- > Corrosion and UV Resistant
- > High Mechanical Build and Abrasion Resistant
- > Supports speeds up to 10 meter per second
- > Designed for long self-supporting lengths
- > Open, Enclosed, and Sliding Types available
- > Dividers, Separators, and Tie Wraps

**Product Range -**

- | CPS Type Cable Drag Chain |
- | ST Type Cable Drag Chain | Normal Type | Enclosed Type | Sliding Type | Sliding With Roller Type |
- | Sabin Type Cable Drag Chain | Normal Type | Enclosed Type |



NOTES

Blank lined area for notes.

**connectwell**

INNOVATING FOR A  
CONNECTED FUTURE



**CONNECTWELL INDUSTRIES PVT. LTD.**  
B4, Phase 2, MIDC, Dombivli - 421 204, India

connect@connectwell.com  
+91 251 7120 600 / 6762 600



connectwell.com



LinkedIn